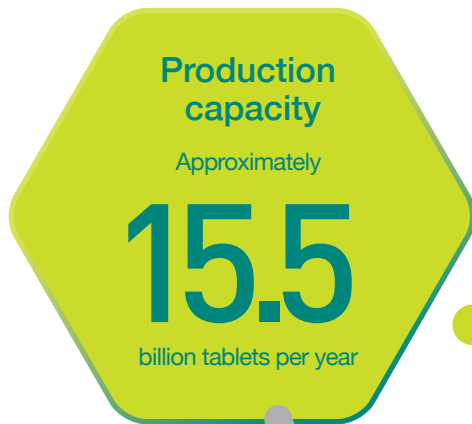


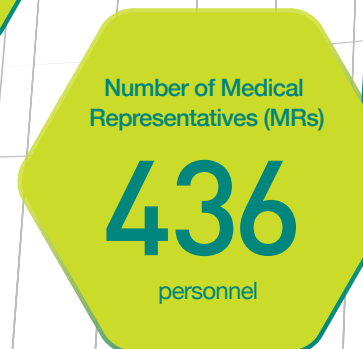
# Stable supply capability

With our industry-leading production system, we are able to maintain a stable supply of high-quality pharmaceutical products.



Sawai

# Corporate “Always Putting



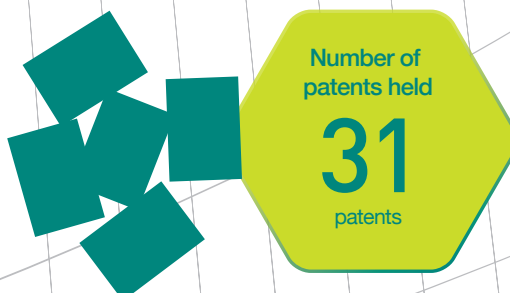
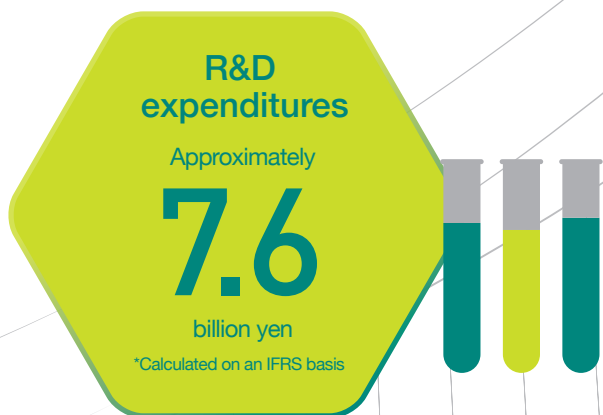
# Provision of information

We provide information about our products in a timely manner through three main information channels.

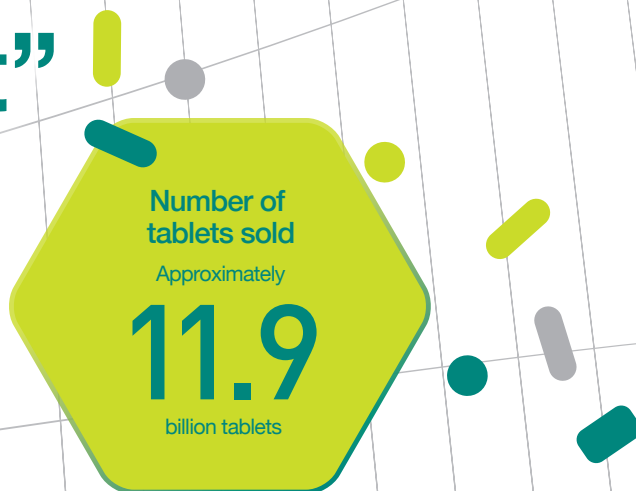
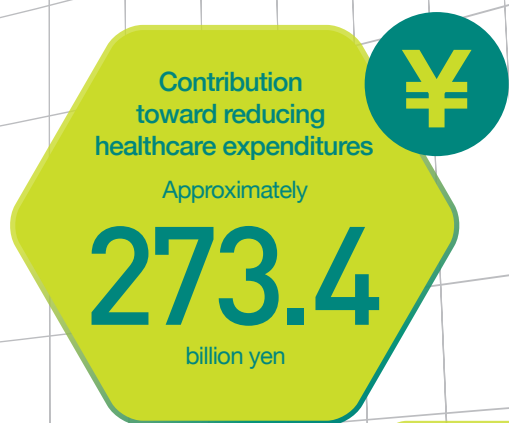
\*All data presented here is based on the actual performance of the Sawai Pharmaceutical Group (Japan) in FY2018.

# Formulation technology

We are constantly refining our designs to make our pharmaceutical products even easier for patients to take.



# Philosophy "Patients First"



# Social contribution

We make a positive contribution to society by providing high-quality and high, value-added generic drugs.