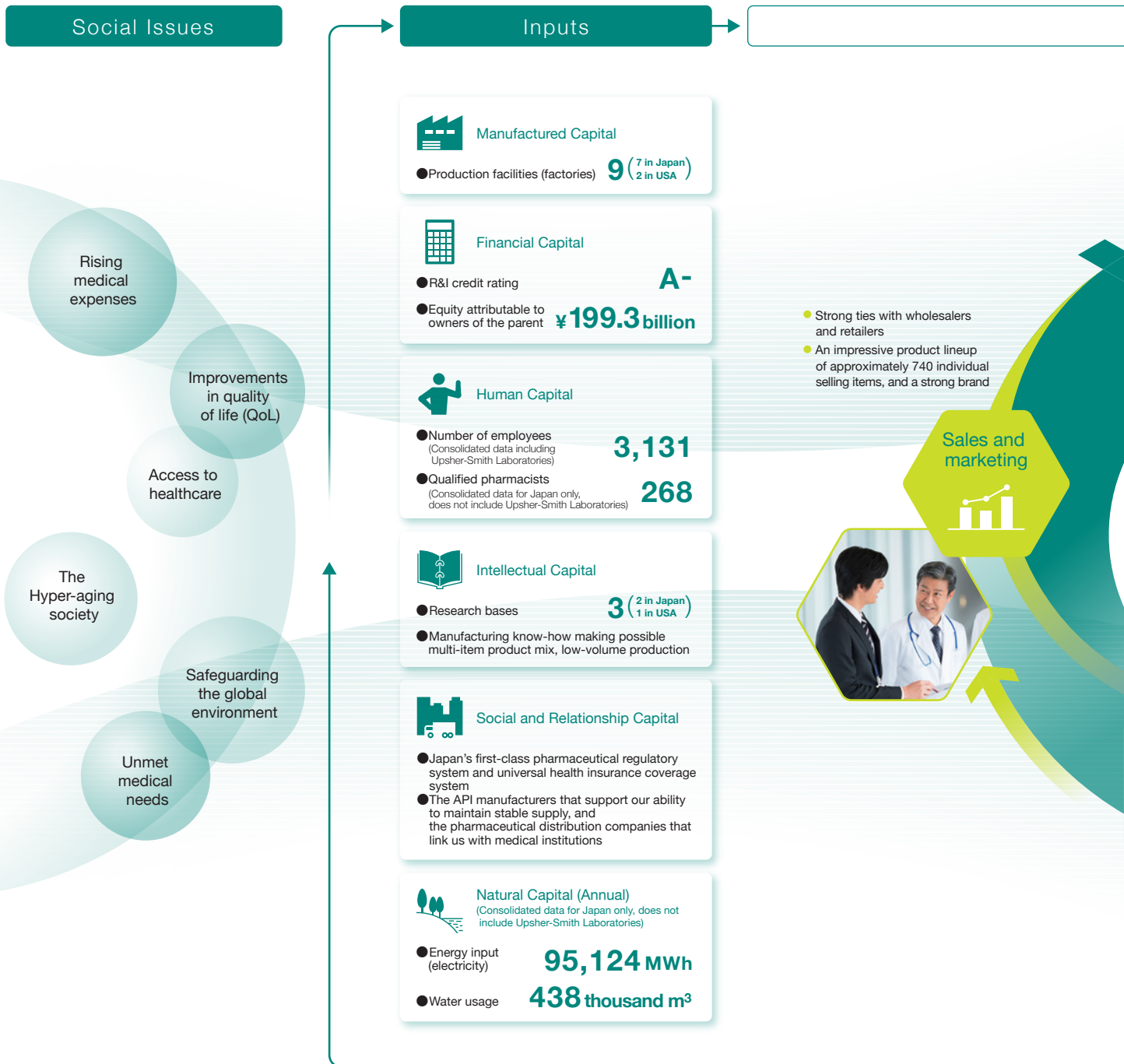


Aiming to make a positive contribution toward the development of a sustainable society by helping patients realize improved and more satisfactory quality of life, while also reducing health



ment of a health and a care costs

The first to concurrently develop, launch, and consistently supply high-quality, high-value-added generic drugs, Sawai provides conscientiously created products to patients through medical institutions. Our business model centers on efforts to achieve a sustainable growth cycle—in realizing our Corporate Philosophy, we will increase our corporate value—by helping patients realize healthy lives and by contributing to society by reducing medical expenses.

